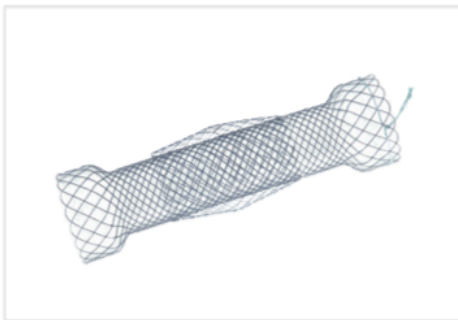
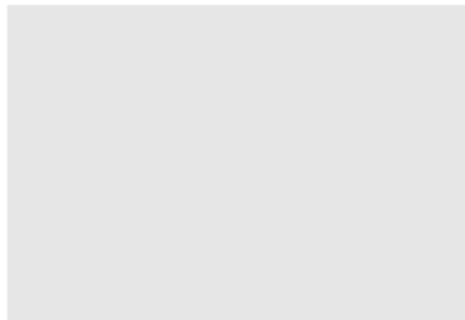
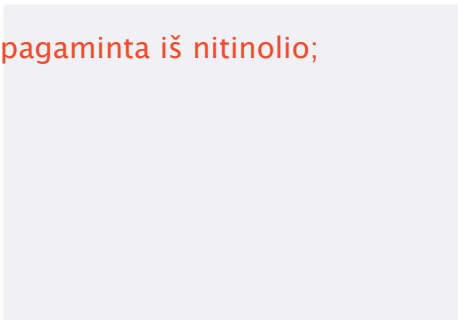


TAEWOONG
NITI-S™



Stento karkaso pynė pagaminta iš nitinolio;

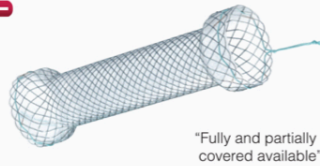


Gastrointestinal Self-expandable Metal Stent

Esophageal Stent

Esophageal Stent

S



for benign and malignant esophageal strictures

- **Fixed cell with braided construction**
 - high flexibility and optimal radial force
 - to reduce the risk of tumor ingrowth
- **Silicone covering and soft and round ends**
 - to reduce tissue hyperplasia reaction

"Fully and partially covered available"

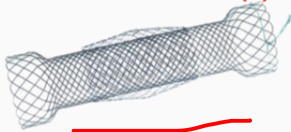
DUAL™



for benign and malignant esophageal strictures

- **Dual structure with a weaving construction**
 - The weaving construction enables the stent to conform to the esophagus movement
 - Dual structure minimizes foreshortening and allows accurate stent positioning

DOUBLE™

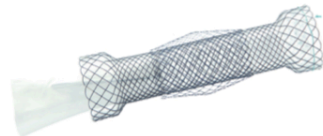


Stento karkasas pintas taisyklingo rombo formos pyne, su atraumatiškais suapvalintais kraštais;

for malignant esophageal strictures

- **Double layered design**
 - silicone full covering prevents the risk of tumor ingrowth
 - The additional uncovered outer mesh helps to resist migration

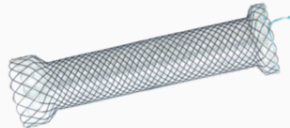
DOUBLE™ (Anti-reflux)



for preventing gastroesophageal reflux

- **Anti-reflux PTFE skirt**
 - to block gastric reflux with the stent placement at the EG junction
- **Additional uncovered outer mesh to resist migration**

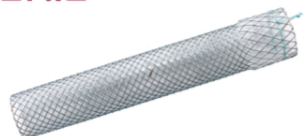
CERVICAL™



for upper esophageal strictures

- **Short proximal head design**
 - to prevent damage of the vocal cords in case of placement close to the upper esophageal sphincter
- **Fully covered design and retrieval string to help easy removal**

CONIO™



for hypopharyngeal strictures

- **Small diameter with proximal head design**
 - specially designed for refractory hypopharyngeal strictures
- **Fully covered design and retrieval string to help easy removal**

CONIO™ II



for benign and malignant upper, middle esophageal strictures

- **Head:** A Silicone-covered S type structure for better palliation
- **Body:** A conformable D type with a PTFE membrane to prevent stent-related complications
- **Bumper:** A silicone-coated Double Ring to prevent migration

MEGA™



for leak or fistula after sleeve gastrectomy

- **Soft and flexible design**
 - to adapt to the acute anatomy after sleeve gastrectomy
- **Fully covered with silicone**
 - to allow easy removal
- **Large diameter and long length of the stent**
 - to prevent migration

BETA™



for leak or fistula after bariatric surgery

- **Outer double layer design with silicone and PTFE combination covering**
 - to prevent the risk of migration and contact of any substance into the leak or fistula
 - to prevent tissue ingrowth and allow easy removal
- **Flexible and conformable structure**
 - to fit in tortuous anatomy

įvedimo sistemos ilgis 70cm. Stento ilgis 6–15cm.,
diametras 16–128mm arba 22–24mm (pagal poreikį).

Ordering Information

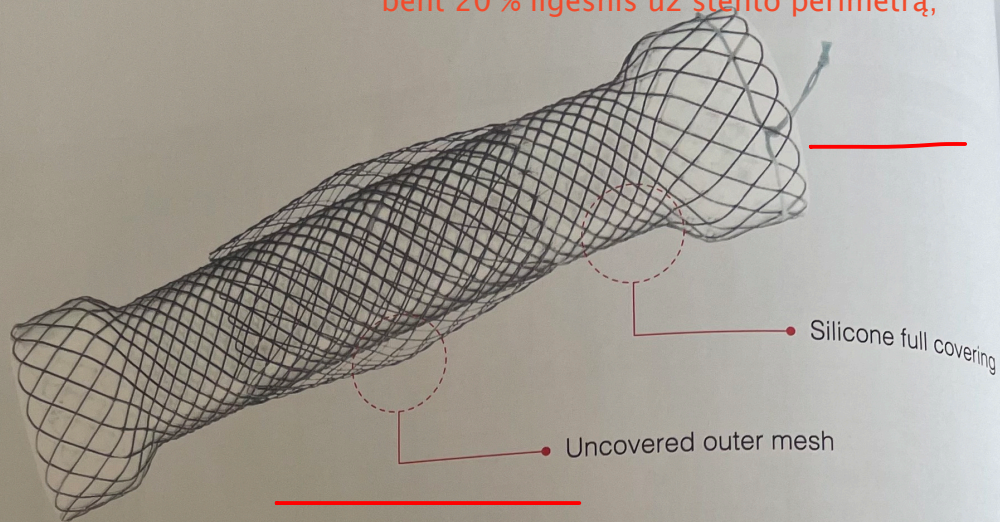
Stent Type	Code		Stent Size		Delivery system
	Proximal String	Both String	Diameter (mm)	Length (cm)	Length (cm)
S	ES***#F	ES***#FR2	16, 18, 20, 22, 24, 28	6, 8, 10, 12, 14, 15	70
S (Both bare)	ES***#B				
DUAL™	EK***#F		18, 20	6, 8, 10, 12, 14, 15, 18, 20	
			22	6, 8, 10, 12, 14, 15, 18	
			24, 28	6, 8, 10, 12, 14, 15	
DOUBLE™	ES***#FD	ES***#FDR2	16, 18, 20, 22, 24, 28	6, 8, 10, 12, 14, 15	
DOUBLE™ (Anti-reflux)	EA***#FD				
CONIO™	ES***#FN	ES***#FNR2	10, 12, 14, 16	6, 8, 10, 12, 14, 15	
CONIO™ II	EK***#FN		10, 12, 14, 16	8, 10, 12	
CERVICAL™	ES***#FV	ES***#FVR2	16, 18, 20, 22, 24	6, 8, 10, 12, 14, 15	
MEGA™	ES***#F	ES***#FR2	22, 24, 28	18, 23	
BETA™	EK***#FND2		22, 24	14, 15, 16, 18, 20, 22	
			26, 28	14, 15, 16, 18, 20	
BETA™ II	EK***#FNT2		18, 20, 22	8, 10, 12, 14, 15, 16, 18, 20	
			24, 26, 28	10, 12, 14, 15, 16, 18, 20	

DOUBLE™

for malignant esophageal strictures

Esophageal Stent

Abiejuose stento galuose yra "lasso" tipo siūlas, skirtas stento padėties koregavimui; "lasso" siūlas polimerinis, bent 20 % ilgesnis už stento perimetrą;

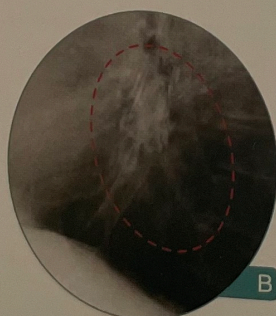


Stentas "kaulo" formos; viršutinė jo dalis – platesnė už apatinę arba vienas užsibaigiantis platėjančiomis kilpelėmis; stentas turi "antimigracinę" formą;

FEATURE

- Double layered design
 - Full silicone covering prevents the risk of tumor ingrowth
 - The additional uncovered outer mesh helps to resist migration
- Retrieval string at proximal end helps repositioning
- Radiopaque marker: 4 (four) at both ends & 2 (two) in the middle

Stento galuose ir viduryje yra rentgenokontrastiniai markeriai, kurių kiekviename lygmenyje iš viso yra 10 ;



"Its double-layered design is probably important in preventing migration. In addition, the complete covering of the Niti-S stent may be a factor in preventing tissue overgrowth at both ends of the stent."

- A. Endoscopic view inside the Niti-S DOUBLE™ stent
B. The Niti-S DOUBLE™ stent is positioned partially in the esophagus and expanding below the diaphragm

[Gastrointest Endosc. 2006 Jan;63(1):134-40]

ORDERING INFORMATION

Distal Release					Proximal Release				
Code	Stent		Delivery		Code	Stent		Delivery	
	Diameter (mm)	Length (cm)	Profile (Fr)	Usable Length (cm)		Diameter (mm)	Length (cm)	Profile (Fr)	Usable Length (cm)
ES1606FD	16	6	18	70	ESP1606FD	16	6	18	70
ES1608FD		8			ESP1608FD		8		
ES1610FD		10			ESP1610FD		10		
ES1612FD		12			ESP1612FD		12		
ES1614FD		14			ESP1614FD		14		
ES1615FD		15			ESP1615FD		15		
ES1806FD	18	6	18		ESP1806FD	18	6	18	
ES1808FD		8			ESP1808FD		8		
ES1810FD		10			ESP1810FD		10		
ES1812FD		12			ESP1812FD		12		
ES1814FD		14			ESP1814FD		14		
ES1815FD		15			ESP1815FD		15		
ES2006FD	20	6	20		ESP2006FD	20	6	20	
ES2008FD		8			ESP2008FD		8		
ES2010FD		10			ESP2010FD		10		
ES2012FD		12			ESP2012FD		12		
ES2014FD		14			ESP2014FD		14		
ES2015FD		15			ESP2015FD		15		
ES2206FD	22	6	20		ESP2206FD	22	6	20	
ES2208FD		8			ESP2208FD		8		
ES2210FD		10			ESP2210FD		10		
ES2212FD		12			ESP2212FD		12		
ES2214FD		14			ESP2214FD		14		
ES2215FD		15			ESP2215FD		15		
ES2406FD	24	6	22		ESP2406FD	24	6	22	
ES2408FD		8			ESP2408FD		8		
ES2410FD		10			ESP2410FD		10		
ES2412FD		12			ESP2412FD		12		
ES2414FD		14			ESP2414FD		14		
ES2415FD		15			ESP2415FD		15		
ES2806FD	28	6	22		ESP2806FD	28	6	22	
ES2808FD		8			ESP2808FD		8		
ES2810FD		10			ESP2810FD		10		
ES2812FD		12			ESP2812FD		12		
ES2814FD		14			ESP2814FD		14		
ES2815FD		15			ESP2815FD		15		

*Stents with retrieval strings on both ends: ES**##FDR2

*Stents with retrieval strings on both ends: ESP**##FDR2

Abiejuose stento galuose yra "lasso" tipo siūlas.

RELEASED ARTICLE

- * Double-layered covered stent for the treatment of malignant oesophageal obstructions: Systematic review and meta-analysis by Zeiad Hussain et al [World J Gastroenterol. 2016 Sep 14;22(34):7841-50]
- * Double-type metallic stents efficacy for the management of post-operative fistulas, leakages, and perforations of the upper gastrointestinal tract by Jean-Michel Gonzalez et al [Surg Endosc 2015;29:2013-2018]
- * Outcomes Following Oesophageal Stent Insertion for Palliation of Malignant Strictures: A Large Single Center Series by Nicholas J. Battersby, BMEDSc, MARCS et al [J Surg Oncol. 2012 Jan;105(1):60-5]
- * New Design Esophageal Stents for the Palliation of Dysphagia From Esophageal or Gastric Cardia Cancer: A Randomized Trial by Els M.L. Verschuur, M.Sc et al [Am J Gastroenterol. 2008 Feb;103(2):304-12]
- * A new esophageal stent design (Niti-S stent) for the prevention of migration: a prospective study in 42 patients by NICHOLAS J. BATTERSBY, BMedSc, MRCS et al [Gastrointest Endosc. 2006 Jan;63(1):134-40]